

## US-guided peripheral vascular interventions, comments on the EFSUMB guidelines

Christoph Frank Dietrich<sup>1,2</sup>, Rudolf Horn<sup>3</sup>, Susanne Morf<sup>4</sup>, Liliana Chiorean<sup>2,5</sup>, Yi Dong<sup>6</sup>, Xin Wu Cui<sup>7</sup>, Nathan Atkinson<sup>8</sup>, Christian Jenssen<sup>9</sup>

<sup>1</sup>Sino-German Research Center of Ultrasound in Medicine, The First Affiliated Hospital of Zhengzhou University, Zhengzhou, China, <sup>2</sup>Medical Department 2, Caritas-Krankenhaus Bad Mergentheim, Academic Teaching Hospital of the University of Würzburg, Germany, <sup>3</sup>Notfallstation, Kantonsspital Glarus, Schweiz, <sup>4</sup>Intensivmedizin Kantonsspital Graubünden, Chur, Schweiz, <sup>5</sup>Department of Medical Imaging, des Cévennes Clinic, Annonay, France, <sup>6</sup>Department of Ultrasound, Zhongshan Hospital, Fudan University, Shanghai, China, <sup>7</sup>Department of Medical Ultrasound, Tongji Hospital, Tongji Medical College, Huazhong University of Science and Technology, Wuhan, China, <sup>8</sup>Translational Gastroenterology Unit, John Radcliffe Hospital, Oxford University Hospitals NHS Trust, <sup>9</sup>Department of Internal Medicine, Krankenhaus Märkisch Oderland Strausberg/Wriezen, Germany

### Abstract

Peripheral venous as well as arterial punctures have traditionally been performed on the basis of designated anatomical landmarks. However, due to patients' individual anatomy and vessel pathology and depending on individual operators' skill, this landmark approach is associated with a significant failure rate and complication risk. This review comments on the evidence-based recommendations on ultrasound (US)-guided vascular access which have been published recently within the framework of Guidelines on Interventional Ultrasound (INVUS) of the European Federation of Societies for US in Medicine and Biology (EFSUMB) from a clinical practice point of view. Part 1 of the review had its focus on general aspects of US-guidance and on central venous access, whereas part 2 refers to peripheral vascular access.

**Keywords:** Guidelines, recommendations, interventions, complications, guidance.

### Introduction

This review comments on the recently published European Federation of Societies for Ultrasound in Medicine and Biology (EFSUMB) on interventional ultrasound (US), part VI, US-guided vascular interventions [1], and gives practical advice how to perform real-time ultrasound (RTUS)-guided access to peripheral veins and arteries.

### Peripheral veins

Most punctures of peripheral veins will be performed successfully without any image-guidance based sim-

ply on anatomical landmarks, inspection and palpation. However, US-guidance may be helpful and should be considered if traditional placement of peripheral venous catheters has failed or in the case of apparently difficult access conditions [1].

#### *Anatomy and diameter*

In general, a larger vein is preferred for peripheral venous access (e.g. brachial vein). The pre-procedural sonographic evaluation allows a rational choice of the appropriate diameter of the catheter, which in the case of venous access particularly should not exceed 1/3 of the internal diameter of the target vein [1,2]. The peripheral vein should be larger than 3–4.5 millimetres for successful puncture and should be located between 3–15 mm under the skin [3]. Increasing vessel diameter is associated with increasing likelihood of success. Down to a depth of 16 mm, the larger of two vessels identified yields a greater likelihood of success, even if located comparatively deeper [3]. Witting et al reported higher success rates for veins with a diameter  $\geq 4$  mm versus those with a diameter  $< 4$  mm [4].

Received 03.04.2016 Accepted 15.04.2016

Med Ultrason

2016, Vol. 18, No 2, 231-239

Corresponding author: Prof. Dr. med. Christoph F Dietrich  
Med. Klinik 2, Caritas-Krankenhaus  
Uhlandstr. 7  
D-97980 Bad Mergentheim, Germany  
E-mail: christoph.dietrich@ckbm.de

### *Technique and results*

Before puncture, it is mandatory to clearly identify the vein and to rule out thrombosis. Three systematic reviews have demonstrated that US-guidance increases the success rate of peripheral venous cannulation [5-7]. Peripheral venous access under sonographic guidance is safe in adults and in pediatric patients as well [8-10], with an overall success rate of 91% and a successful first attempt in 73% of the cases [11]. Even in the study of Costantino et al [12], the use of US to guide placement of peripheral intravenous catheters in patients with difficult access resulted in a success rate of 97% as compared to the success rate of only 33% by using palpation and landmark guidance. Moreover, the US-guided approach required less time overall (13 min versus 30 min), less time from first percutaneous puncture (4 min versus 15 min), and fewer percutaneous punctures (1.7 versus 3.7), resulting in greater patient satisfaction [12]. Greater patient satisfaction was reported also by Schoenfeld et al [13]. The same results have also been obtained in pediatric patients, with an overall success rates of 80% versus 64% respectively, less overall time (6.3 versus 14.4 min), fewer attempts (median, 1 versus 3) and fewer needle redirections (median, 2 versus 10) [14].

In a prospective randomized study of patients with difficult venous access, defined as at least three failed attempts by nurses, US-guided peripheral line placement was superior to an external jugular vein approach, with initial success of 84% versus 50% respectively and an overall success of 89% versus 55% [15]. This method is a safe and effective alternative to central venous access in patients without visible or palpable peripheral veins requiring simple venous access, which is especially the case in many emergency department (ED) patients [11,16,17]. Over a period of five years, it was shown in 401,532 ED patients, that central venous catheter placement could be markedly reduced in non-critically ill patients by the use of US-guided peripheral intravenous access [18]. Also in intensive care unit patients, US-guided peripheral venous access helps to avoid central venous catheter placement and to reduce central line days [19].

### **Risks and complications**

The only complications of US-guided peripheral venous access are arterial puncture and nerve contact [12]. Brachial artery puncture has been reported in 2% of cases of brachial and basilic vein cannulation under US-guidance in 100 emergency department patients with difficult intravenous access [11].

### **Femoral veins**

#### *Anatomy*

Demonstrated with pelvic computed-tomography scans, in the sagittal plane a portion of the FV is overlapped by the femoral artery in 65% of patients [20]. This finding was confirmed by US scans of 50 patients [21].

### *Technique and results*

In a randomized trial of 20 patients undergoing cardio-pulmonary resuscitation in emergency departments, the RTUS-guided approach had a higher success rate when compared to the landmark approach (90% versus 65%), with a lower mean number of needle passes ( $2.3 \pm 3$  versus  $5.0 \pm 5$ ), and a lower rate of arterial catheterization (0% versus 20%) [22]. In patients who needed acute hemodialysis access, the success rate was 100% under RTUS-guidance, with a higher rate of successful first attempts as compared to the landmark approach (92.9% versus 55.3%), and a shorter mean total procedure time ( $45.1 \pm 18.8$  versus  $79.4 \pm 61.7$  seconds) [23].

### *Risks and complications*

In patients requiring acute hemodialysis access, femoral artery puncture occurred in 7.1% of the cases when using US-guided access, and in 15.8% of the cases when using the landmark approach [23].

### **Arteries**

Overall, arterial line placement is considered a safe procedure, with a rate of major complications that is below 1% [24]. Arterial lines can be placed in various arteries, including the radial, ulnar, brachial, axillary, posterior tibial, femoral, and dorsalis pedis arteries. In both adults and children, the most common site of cannulation is the radial artery, primarily because of the superficial nature of the vessel. Additional advantages of radial artery cannulation include the consistency of the anatomy and the low rate of complications [25]. After the radial artery, the femoral artery is the second most common site for arterial cannulation. One advantage of femoral artery cannulation is that the vessel is larger than the radial artery and has stronger pulsation. Additional advantages include decreased risks of thrombosis and accidental catheter removal, though the overall complication rate remains comparable [26]. For percutaneous transarterial diagnostic and therapeutic interventions, preferably radial and femoral access routes are used.

### *General remarks*

Generally, arteries are round, their wall is thicker than the veins wall, and normally a pulsation is visible. Colour Doppler Imaging (CDI) may be helpful to differentiate between arteries and veins, to measure the diameter and to identify pathologies like calcification, dissection, occlusion or anatomical variants.

Arterial RTUS-guided access techniques must be performed under sterile conditions. The transducer is placed in a sterile cover. The target vessel is examined using B-mode and colour Doppler US in a longitudinal and cross-sectional view. After local anesthesia, the arte-

rial puncture is performed usually in the long-axis view showing the full needle path and facilitating wire-insertion [27]. Going beyond arterial access, US guidance may be used also to facilitate endovascular interventions of femoropopliteal, crural, aortoiliac, forearm, carotid and renovascular vascular occlusions in selected patients or in particular with severe renal insufficiency or iodine allergy. The results of RTUS-guided peripheral vascular interventions are comparable to fluoroscopy-guided endovascular treatment [27].

#### *Indications and contraindications*

The indications for arterial line placement are as follows: continuous direct blood pressure monitoring; arterial catheter mean artery pressure measurements are more accurate than sphygmomanometric blood pressure readings – especially in obese or very thin patients [28]; inability to use indirect BP monitoring (eg, in patients with severe burns or very low blood pressure); frequent arterial blood sampling.

Transarterial access is indicated for cardiac catheterization, diagnostic angiography and for various endovascular interventions.

Contraindications for arterial line placement and transarterial access include [29]: absent pulse; thromboangiitis obliterans (Buerger disease); full-thickness burns over the cannulation site; inadequate circulation to the extremity e.g. Raynaud syndrome; inadequate collateral flow; infection at the cannulation site; previous surgery in the area; synthetic vascular graft.

#### *Risks and complications*

Immediate adverse events of arterial puncture may include wall hematoma, dissection and acute thrombotic occlusion. The rate of these complications is related to the lumen diameter of the artery, the age of the patient, the presence of peripheral vascular disease, peri-interventional use of heparin, the number of puncture attempts and the size of the indwelling catheter or sheath [30,31].

Catheter site infections are uncommon but the incidence increases with the length of time the catheter is in place [32]. The risk of arterial catheter-related bloodstream infection (CRBSI) was found to be higher with the femoral site than with the radial site [33]. Common complications of arterial line placement are temporary radial artery occlusion, bleeding and hematoma [26]. Rare complications include permanent ischemic damage, pseudoaneurysm formation, thrombosis, arteriovenous fistula, air embolism and nerve injury. Femoral artery dissection is a very rare event.

#### *Tips and tricks (how to avoid risks and complications)*

The tips, tricks and technique are similar as for the veins. In addition, for arterial access the following rules should be kept in mind: identify the artery by its pulsatile

arterial flow pattern; to reduce the complication rate of arterial line placement, the catheter should be removed as soon as possible; the extremity with the catheter in place as well as the puncture site should be inspected daily for signs of ischemia, swelling and local infection; the catheter must be removed immediately at the first sign of circulatory compromise, clot formation or infection. In this situation, flushing or manipulating the catheter must be avoided.

Several approaches have been validated to prevent complications of transradial and transfemoral access for percutaneous transarterial interventions: pre-interventional US vessel mapping and risk stratification, RTUS-guidance, appropriate anti-coagulation, intra-arterial application of nitroglycerin in the case of transradial approach, and reduction of sheath size [1]. Summarizing the available evidence, RTUS-guidance helps to reduce the complication rate of arterial access for cardiac and vascular interventions [34-43]. Technical failures are related to difficult US visualization of the interventional anatomy, especially in the presence of significant calcification [35,39,44].

#### **Radial artery**

##### *Anatomy*

The radial artery originates in the cubital fossa from the brachial artery. It traverses the lateral aspect of the forearm and gives rise to the palmar arches that provide vascular flow for the hand. At the wrist, the radial artery is proximal and medial to the radial styloid process located and just lateral to the flexor carpi radialis tendon.

##### *Technique and results*

Before puncturing the radial artery, adequate palpable collateral flow (ulnar blood flow) to the hand has to be confirmed. The initial puncture site should be as distal as possible. A common location is over the radial pulse, at the proximal flexor crease of the wrist. In any case, the puncture site should be at least 1 cm proximal to the styloid process so as to avoid puncturing the retinaculum flexorum and the small superficial branch of the radial artery.

Five meta-analyses of US guidance for radial artery catheterization in children and in adults reported a significant reduction of first-attempt failure, procedural time, and local hematoma rate compared to the standard landmark and palpation-based approach [45-49]. Regarding transradial access for cardiac catheterisation, a significant improvement of first-pass access rates, number of attempts and time to access in comparison to the traditional palpation-guided approach was shown in a prospective multicentre randomized control trial (RCT) [50]. Another RCT did not find substantial differences between both approaches in terms of success rate, time to

access, or safety however. Only in the case of failure of palpation-guided radial access, an additional US-guided attempt was associated with a shorter overall time to access [51]. Among experienced cardiac anesthesiologists, the use of US guidance had no impact on procedure success or complications [52].

### **Femoral artery**

#### *Anatomy*

The femoral artery originates at the inguinal ligament from the external iliac artery. It passes under the inguinal ligament at approximately the midpoint between the anterior superior iliac spine and the pubic tubercle. It lies normally medial to the femoral nerve and lateral to the femoral vein and lymphatics.

#### *Technique and results*

To facilitate control of periprocedural bleeding and to prevent bleeding into the pelvis, the common femoral artery should always be accessed approximately 2.5 cm below the inguinal ligament, where it can be easily compressed. Problems may arise in the case of a high bifurcation of the common femoral artery. Normally, the femoral arterial pulsation can be palpated midway between the anterior superior iliac spine and the pubic symphysis.

Femoral artery access for percutaneous transarterial angiographic interventions usually is performed based on palpation and guided by fluoroscopy. However, in very obese patients, in patients with nonpalpable arterial pulse and in patients with extensive scarring in the groin region, in particular after vascular surgery (the “hostile groin”), femoral artery cannulation may prove difficult. The first report on Doppler US-guided femoral artery access was published in 1980 [53]. A RCT showed that US-guided puncture of the femoral arteries in comparison with traditional palpation-guided access, significantly decreased the number of attempts needed, as well as time to successful arterial puncture, in patients with weak arterial pulse and those with a leg circumference of  $\geq 60$  cm. In this study however, US-guidance was more time-consuming in those patients with a strong femoral artery pulse [54]. A multicentre RCT found RTUS-guidance for retrograde femoral artery access to be more successful than fluoroscopic guidance, but only in patients with a high bifurcation of the common femoral artery. In all patients RTUS-guidance improved first-pass access rate and speed of the procedure and resulted in a lower rate of venous puncture [44,55,56]. If traditional common femoral artery access is hampered by morbid obesity or by a “hostile groin”, RTUS-guided superficial artery access seems to be technically easier, safer and faster compared with RTUS-guided common femoral artery access [55]. Summarizing the results of the randomized studies, a recent meta-analysis found RTUS-guided catheterization

of the femoral artery resulted in a 49% reduction in overall complications (hematoma, accidental venipuncture) and increased the likelihood of first-attempt cannulation success by 42% [57]. In patients with large-bore catheter ( $\geq 20$  French) cannulation of the femoral artery for the endovascular placement of aortic stent grafts, RTUS-guidance reduced vascular complications, improved the success rate of percutaneous access closure and reduced total intervention time [58].

### **Pedal arteries**

A recent study showed feasibility and high success rate for US-guided transpedal artery access for treatment of peripheral artery disease [59].

## **Complications of vascular access**

### **Arterial pseudoaneurysm**

#### *Definition*

Arterial pseudoaneurysm (PSAN, false aneurysm) is a complete rupture of the arterial wall contained by the surrounding tissues. At present, most PSANs result from percutaneous transarterial cardiac and peripheral vascular interventions. Trauma, infection or surgical (vascular) interventions are rare causes. Due to the risk of concomitant complications, PSAN formation implies further treatment [60].

#### *Frequency*

Femoral PSANs are reported to occur with a frequency of 0.05 - 2 % after diagnostic angiography and 2 - 8 % after transarterial vascular interventions using a transfemoral approach [27]. After transradial catheterisation, PSAN is a very rare event [61,62].

#### *Risk factors and complications*

Risk factors are large-size sheaths, long and complex interventions, inadequate compression after sheath removal, and puncture site above the inguinal ligament. Patient-specific risk factors are arterial hypertension, diabetes mellitus, coronary artery disease, high body mass index, coagulation disorders and anticoagulation treatment, in particular combined antiplatelet and anticoagulant therapy. Symptoms include inguinal pain, swelling, bruit and rarely peripheral malperfusion. Potential complications are rupture and overt bleeding, compression of nerves, and infection. Combination of PSAN with an arteriovenous fistula may occur [60,63-65].

#### *Diagnosis*

Clinical presentation of peripheral PSNAs is painful swelling accompanied by a bruit. On B-mode US, a hypoechoic mass adjacent to the artery can be visualized, closely located to the puncture site. Sometimes, arterial pulsations are visible. PSAN may consist of several connecting chambers (loculated PSAN). Colour Doppler

US shows a typical pulsatile, bidirectional swirling flow pattern with rapid systolic inflow and decelerated diastolic outflow. The connecting tract (“aneurysm neck”) between the PSAN and the feeding artery varies in diameter and length (fig 1). The size of the PSAN, its morphology, thrombosed portions, length and diameter of the connecting tract, and anatomical relation of PSAN and vein accompanying the affected artery should be evaluated [27,66,67].

*Treatment*

Small PSANs ( $\leq 20$  mm) will resolve spontaneously in approximately 50 % of cases depending on coagulation status [65]. Close follow-up is required. If treatment is necessary, options include “blind” compression, US-assisted or RTUS-guided compression [68,69], RTUS-guided para-aneurysmal saline-injection [70-73], RTUS-guided intralesional thrombin injection [60,68,74-77], percutaneous transarterial closure of the arterial defect using a covered metal stent or surgical repair [78].

*Compression*

A recent Cochrane analysis showed that compression treatment is effective in achieving PSAN thrombosis. There is no proof from comparative studies that

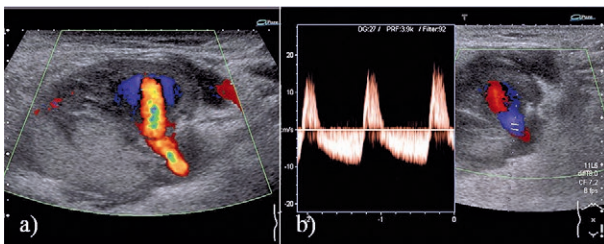
RTUS-guidance confers any benefit over manual compression or compression using a mechanical device (FemoStop) [68]. RTUS-guided compression treatment is time consuming and often painful. Average compression time to occlusion in one retrospective study was 33 (10-120) minutes [69]. Consequently, sufficient analgesic treatment is mandatory. In one large case series (n=281 patients), the overall success rate was only 72%. Anticoagulant treatment (further reducing the success rate to approximately 30% of cases), and large PSAN size negatively affect outcome of compression treatment [79,80].

*Saline injection*

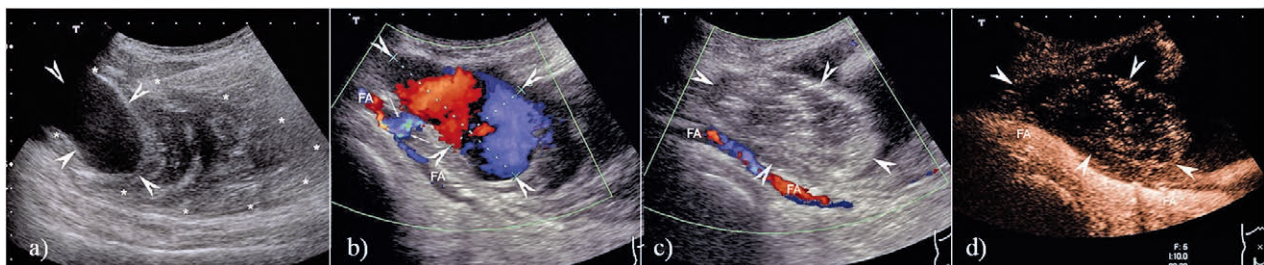
Combining manual compression with prior large-volume US-guided saline injection around the PSAN neck shortens compression time and increases success rate to approximately 90% [70-72]. One RCT compared RTUS-guided compression and RTUS-guided para-aneurysmal saline injection and found similar final success rates of approximately 90% for both techniques. However, saline injection treatment was less likely to cause vasovagal reactions and reduced duration of the procedure compared to compression [73]. With this technique, under RTUS-guidance, 20-80 ml of isotonic saline solution is injected using a 22-gauge injection needle close to the PSAN neck until blood flow within the PSAN is markedly reduced or disappears. If necessary, a short period of RTUS-guided compression is added to achieve complete flow cessation [70-72].

*Thrombin injection*

Percutaneous thrombin injection for the obliteration of PSAN was introduced in 1986 [81]. In short, a 22-gauge injection needle is advanced into the inflow tract of the PSAN under sterile conditions and RTUS-guidance, followed by injection of small amounts of thrombin solution until complete cessation of blood flow is achieved (fig 2).



**Fig 1.** Large femoral PSAN with partial thrombosis 14 days after percutaneous transarterial coronary intervention in a patient with double antiplatelet treatment: reversal of blood flow direction at the apex of the PSAN (a; red: inflow; blue: outflow); Colour Doppler with typical “to and fro” waveform (b; Doppler sample within the connecting tract to the common femoral artery).



**Fig 2.** Thrombin injection of a huge femoral PSAN 28 days after percutaneous transarterial coronary intervention in a patient on dual antiplatelet treatment: partial thrombosis of the very large PSAN (a, b: the PSAN is marked by asterix; the “open” part measuring 64 x 35 mm is marked by arrowheads); only 1 minute after injection thrombosis develops within the formerly “open” part (arrowheads) causing multiple hyperechoic reflexes, no flow within the PSAN in colour Doppler (c; femoral artery (FA) with flow using colour Doppler); complete thrombosis of the PSAN as well as unimpaired flow in the femoral artery are documented by CEUS (d; femoral artery (FA) is enhancing, the formerly “open part” of the PSAN (arrowheads) is not enhancing).

Several RCT have shown higher treatment efficacy of US-guided thrombin injection than a single session of US-guided compression. However, meta-analysis of these data failed to demonstrate a statistical significance of this advantage [68]. Overall success rates of thrombin injection treatment were reported between 94 and 100% [60,75-77]. The effect of thrombin injection therapy can be observed immediately and seems to be independent of antiplatelet or anticoagulant therapy and PSAN diameter [60,76,77]. Complications are rare, occurring in 1.3% of cases. Clinically, relevant arterial embolisation was observed in 0.5% of cases [60].

#### *Cyanacrylat injection*

Single case reports have described the successful use of n-butyl cyanoacrylate combined with temporary transarterial balloon-occlusion of the feeding artery to prevent peripheral embolization of the sealant [82,83].

#### *Treatment algorithm and contra-indications of RTUS-guided treatment*

The decision on the particular treatment technique should be made considering size and anatomy of the PSAN, antiplatelet drug and anticoagulation treatment, symptoms and specific features of the pseudoaneurysms (e.g. lobulation or association with arteriovenous fistula) [1]. The presence of arterio-venous fistula is considered a contra-indication of intralesional thrombin injection due to a high risk of thrombin migration into the deep veins causing thrombosis. Infection, skin necrosis and local compression syndromes necessitate surgical repair [27].

A treatment algorithm assigning patients with small ( $\leq 20$  mm) PSANs and PSANs with a high risk for adverse events of thrombin injection (lack of clearly definable neck, concomitant arteriovenous fistula) to US-guided compression treatment and all other PSANs to RTUS-guided thrombin injection was successful in 97 % of 432 cases. Implantation of a covered stent-graft was successful in two PSANs (0.5%), whereas surgical intervention was necessary in 10 patients (2.3%) [74].

### **Conclusion**

The recently published EFSUMB guidelines on interventional ultrasound (part VI, US-guided vascular interventions) give evidence-based recommendations on the indications of ultrasound-guided access to peripheral veins and arteries including arterial pseudoaneurysms. This review comments these recommendations from a practical point of view and gives practical advice on how to perform ultrasound-guided peripheral vascular interventions.

**Conflict of interest:** none

### **References**

1. Janssen C, Brkljacic B, Hocke M, et al. EFSUMB Guidelines on Interventional Ultrasound (INVUS), Part VI - Ultrasound-Guided Vascular Interventions. *Ultraschall Med* 2015. doi: 10.1055/s-0035-1553450.
2. Lamperti M, Bodenham AR, Pittiruti M, et al. International evidence-based recommendations on ultrasound-guided vascular access. *Intensive Care Med* 2012; 38: 1105-1117.
3. Panebianco NL, Fredette JM, Szyld D, Sagalyn EB, Pines JM, Dean AJ. What you see (sonographically) is what you get: vein and patient characteristics associated with successful ultrasound-guided peripheral intravenous placement in patients with difficult access. *Acad Emerg Med* 2009; 16: 1298-1303.
4. Witting MD, Schenkel SM, Lawner BJ, Euerle BD. Effects of vein width and depth on ultrasound-guided peripheral intravenous success rates. *J Emerg Med* 2010; 39: 70-75.
5. Egan G, Healy D, O'Neill H, Clarke-Moloney M, Grace PA, Walsh SR. Ultrasound guidance for difficult peripheral venous access: systematic review and meta-analysis. *Emerg Med J* 2013; 30: 521-526.
6. Liu YT, Alsaawi A, Bjornsson HM. Ultrasound-guided peripheral venous access: a systematic review of randomized-controlled trials. *Eur J Emerg Med* 2014; 21: 18-23.
7. Stolz LA, Stolz U, Howe C, Farrell IJ, Adhikari S. Ultrasound-guided peripheral venous access: a meta-analysis and systematic review. *J Vasc Access* 2015; 16: 321-326.
8. Sofocleous CT, Schur I, Cooper SG, Quintas JC, Brody L, Shelin R. Sonographically guided placement of peripherally inserted central venous catheters: review of 355 procedures. *AJR Am J Roentgenol* 1998; 170: 1613-1616.
9. Chrisman HB, Omary RA, Nemcek AA, Ryu RK, Saker MB, Vogelzang RL. Peripherally inserted central catheters: guidance with use of US versus venography in 2,650 patients. *J Vasc Interv Radiol* 1999; 10: 473-475.
10. Donaldson JS, Morello FP, Junewick JJ, O'Donovan JC, Lim-Dunham J. Peripherally inserted central venous catheters: US-guided vascular access in pediatric patients. *Radiology* 1995; 197: 542-544.
11. Keyes LE, Frazee BW, Snoey ER, Simon BC, Christy D. Ultrasound-guided brachial and basilic vein cannulation in emergency department patients with difficult intravenous access. *Ann Emerg Med* 1999; 34: 711-714.
12. Costantino TG, Parikh AK, Satz WA, Fojtik JP. Ultrasonography-guided peripheral intravenous access versus traditional approaches in patients with difficult intravenous access. *Ann Emerg Med* 2005; 46: 456-461.
13. Schoenfeld E, Shokoohi H, Boniface K. Ultrasound-guided peripheral intravenous access in the emergency department: patient-centered survey. *West J Emerg Med* 2011; 12: 475-477.
14. Doniger SJ, Ishimine P, Fox JC, Kanegaye JT. Randomized controlled trial of ultrasound-guided peripheral intravenous catheter placement versus traditional techniques in difficult-access pediatric patients. *Pediatr Emerg Care* 2009; 25: 154-159.

15. Costantino TG, Kirtz JF, Satz WA. Ultrasound-guided peripheral venous access vs. the external jugular vein as the initial approach to the patient with difficult vascular access. *J Emerg Med* 2010; 39: 462-467.
16. Abboud PA, Kendall JL. Ultrasound guidance for vascular access. *Emerg Med Clin North Am* 2004; 22: 749-773.
17. Dargin JM, Rebholz CM, Lowenstein RA, Mitchell PM, Feldman JA. Ultrasonography-guided peripheral intravenous catheter survival in ED patients with difficult access. *Am J Emerg Med* 2010; 28: 1-7.
18. Shokoohi H, Boniface K, McCarthy M, et al. Ultrasound-guided peripheral intravenous access program is associated with a marked reduction in central venous catheter use in noncritically ill emergency department patients. *Ann Emerg Med* 2013; 61: 198-203.
19. Gregg SC, Murthi SB, Sisley AC, Stein DM, Scalea TM. Ultrasound-guided peripheral intravenous access in the intensive care unit. *J Crit Care* 2010; 25: 514-519.
20. Baum PA, Matsumoto AH, Teitelbaum GP, Zuurbier RA, Barth KH. Anatomic relationship between the common femoral artery and vein: CT evaluation and clinical significance. *Radiology* 1989; 173: 775-777.
21. Hughes P, Scott C, Bodenham A. Ultrasonography of the femoral vessels in the groin: implications for vascular access. *Anaesthesia* 2000; 55: 1198-1202.
22. Hilty WM, Hudson PA, Levitt MA, Hall JB. Real-time ultrasound-guided femoral vein catheterization during cardiopulmonary resuscitation. *Ann Emerg Med* 1997; 29: 331-336.
23. Kwon TH, Kim YL, Cho DK. Ultrasound-guided cannulation of the femoral vein for acute haemodialysis access. *Nephrol Dial Transplant* 1997; 12: 1009-1012.
24. Cohn JN. Blood pressure measurement in shock. Mechanism of inaccuracy in auscultatory and palpatory methods. *JAMA* 1967; 199: 118-122.
25. Brzezinski M, Luisetti T, London MJ. Radial artery cannulation: a comprehensive review of recent anatomic and physiologic investigations. *Anesth Analg* 2009; 109: 1763-1781.
26. Scheer B, Perel A, Pfeiffer UJ. Clinical review: complications and risk factors of peripheral arterial catheters used for haemodynamic monitoring in anaesthesia and intensive care medicine. *Crit Care* 2002; 6: 199-204.
27. Mueller T, Janssen C. Ultrasound-guided emergency and vascular interventions. In: Dietrich CF, Nuernberg D, eds. *Interventional Ultrasound. A Practical Guide and Atlas*. Stuttgart, New York, Delhi, Rio: Thieme, 2014: 330 - 351.
28. Beards SC, Doedens L, Jackson A, Lipman J. A comparison of arterial lines and insertion techniques in critically ill patients. *Anaesthesia* 1994; 49: 968-973.
29. Milzma D, Jancjar T. Arterial puncture and cannulation. In: Saunders W, ed. *Clinical Procedures in Emergency Medicine*. Philadelphia, 2004: 384-400.
30. Muller DW, Shamir KJ, Ellis SG, Topol EJ. Peripheral vascular complications after conventional and complex percutaneous coronary interventional procedures. *Am J Cardiol* 1992; 69: 63-68.
31. Costa F, van Leeuwen MA, Daemen J, et al. The Rotterdam Radial Access Research: Ultrasound-Based Radial Artery Evaluation for Diagnostic and Therapeutic Coronary Procedures. *Circ Cardiovasc Interv* 2016; 9: e003129.
32. Sessler CN, Alford P. Arterial occlusion after femoral artery cannulation. *Crit Care Med* 1986; 14: 520-521.
33. O'Horo JC, Maki DG, Krupp AE, Safdar N. Arterial catheters as a source of bloodstream infection: a systematic review and meta-analysis. *Crit Care Med* 2014; 42: 1334-1339.
34. Katzenschlager R, Ahmadi A, Minar E, et al. Femoropopliteal artery: initial and 6-month results of color duplex US-guided percutaneous transluminal angioplasty. *Radiology* 1996; 199: 331-334.
35. Ahmadi R, Ugurluoglu A, Schillinger M, Katzenschlager R, Sabeti S, Minar E. Duplex ultrasound-guided femoropopliteal angioplasty: initial and 12-month results from a case controlled study. *J Endovasc Ther* 2002; 9: 873-881.
36. Ascher E, Marks NA, Hingorani AP, Schutzer RW, Mutyala M. Duplex-guided endovascular treatment for occlusive and stenotic lesions of the femoral-popliteal arterial segment: a comparative study in the first 253 cases. *J Vasc Surg* 2006; 44: 1230-1237.
37. Ascher E, Hingorani AP, Marks N. Duplex-guided balloon angioplasty of lower extremity arteries. *Perspect Vasc Surg Endovasc Ther* 2007; 19: 23-31.
38. Bacchini G, La Milia V, Andrulli S, Locatelli F. Color Doppler ultrasonography percutaneous transluminal angioplasty of vascular access grafts. *J Vasc Access* 2007; 8: 81-85.
39. Cianci R, Lavini R, Letizia C, et al. Low-contrast medium doses for ultrasound imaging during renal revascularization by PTA-stenting. *J Nephrol* 2004; 17: 520-524.
40. Ascher E, Hingorani A, Marks N. Duplex-guided balloon angioplasty of failing or nonmaturing arterio-venous fistulae for hemodialysis: a new office-based procedure. *J Vasc Surg* 2009; 50: 594-599.
41. Gallagher JJ, Boniscavage P, Ascher E, et al. Clinical experience with office-based duplex-guided balloon-assisted maturation of arteriovenous fistulas for hemodialysis. *Ann Vasc Surg* 2012; 26: 982-984.
42. Ascher E, Gopal K, Marks N, Boniscavage P, Shiferson A, Hingorani A. Duplex-guided endovascular repair of popliteal artery aneurysms (PAAs): a new approach to avert the use of contrast material and radiation exposure. *Eur J Vasc Endovasc Surg* 2010; 39: 769-773.
43. Ascher E, Marks NA, Schutzer RW, Hingorani AP. Duplex-assisted internal carotid artery balloon angioplasty and stent placement: a novel approach to minimize or eliminate the use of contrast material. *J Vasc Surg* 2005; 41: 409-415.
44. Seto AH, Abu-Fadel MS, Sparling JM, et al. Real-time ultrasound guidance facilitates femoral arterial access and reduces vascular complications: FAUST (Femoral Arterial Access With Ultrasound Trial). *JACC Cardiovasc Interv* 2010; 3: 751-758.
45. Shiloh AL, Savel RH, Paulin LM, Eisen LA. Ultrasound-guided catheterization of the radial artery: a systematic

- review and meta-analysis of randomized controlled trials. *Chest* 2011; 139: 524-529.
46. Tang L, Wang F, Li Y, et al. Ultrasound guidance for radial artery catheterization: an updated meta-analysis of randomized controlled trials. *PLoS One* 2014; 9: e111527.
  47. Gu WJ, Tie HT, Liu JC, Zeng XT. Efficacy of ultrasound-guided radial artery catheterization: a systematic review and meta-analysis of randomized controlled trials. *Crit Care* 2014; 18: R93.
  48. Gao YB, Yan JH, Gao FQ, Pan L, Wang XZ, Lv CJ. Effects of ultrasound-guided radial artery catheterization: an updated meta-analysis. *Am J Emerg Med* 2015; 33: 50-55.
  49. Gu WJ, Wu XD, Wang F, Ma ZL, Gu XP. Ultrasound Guidance Facilitates Radial Artery Catheterization: A Meta-analysis With Trial Sequential Analysis of Randomized Controlled Trials. *Chest* 2016; 149: 166-179.
  50. Seto AH, Roberts JS, Abu-Fadel MS, et al. Real-time ultrasound guidance facilitates transradial access: RAUST (Radial Artery access with Ultrasound Trial). *JACC Cardiovasc Interv* 2015; 8: 283-291.
  51. Zaremski L, Quesada R, Kovacs M, Schernthaner M, Uthoff H. Prospective comparison of palpation versus ultrasound-guided radial access for cardiac catheterization. *J Invasive Cardiol* 2013; 25: 538-542.
  52. Peters C, Schwarz SK, Yarnold CH, Kojic K, Kojic S, Head SJ. Ultrasound guidance versus direct palpation for radial artery catheterization by expert operators: a randomized trial among Canadian cardiac anesthesiologists. *Can J Anaesth* 2015; 62: 1161-1168.
  53. Kaufman SL. Femoral puncture using Doppler ultrasound guidance: aid to transluminal angioplasty and other applications. *AJR Am J Roentgenol* 1980; 134: 402.
  54. Dudeck O, Teichgraber U, Podrabsky P, Lopez Haenninen E, Soerensen R, Ricke J. A randomized trial assessing the value of ultrasound-guided puncture of the femoral artery for interventional investigations. *Int J Cardiovasc Imaging* 2004; 20: 363-368.
  55. Marcus AJ, Lotzof K, Howard A. Access to the superficial femoral artery in the presence of a "hostile groin": a prospective study. *Cardiovasc Intervent Radiol* 2007; 30: 351-354.
  56. Gedikoglu M, Oguzkurt L, Gur S, Andic C, Sariturk C, Ozkan U. Comparison of ultrasound guidance with the traditional palpation and fluoroscopy method for the common femoral artery puncture. *Catheter Cardiovasc Interv* 2013; 82: 1187-1192.
  57. Sobolev M, Slovut DP, Lee Chang A, Shiloh AL, Eisen LA. Ultrasound-Guided Catheterization of the Femoral Artery: A Systematic Review and Meta-Analysis of Randomized Controlled Trials. *J Invasive Cardiol* 2015; 27: 318-323.
  58. Arthurs ZM, Starnes BW, Sohn VY, Singh N, Andersen CA. Ultrasound-guided access improves rate of access-related complications for totally percutaneous aortic aneurysm repair. *Ann Vasc Surg* 2008; 22: 736-741.
  59. Kwan TW, Shah S, Amoroso N, et al. Feasibility and Safety of Routine Transpedal Arterial Access for Treatment of Peripheral Artery Disease. *J Invasive Cardiol* 2015; 27: 327-330.
  60. Webber GW, Jang J, Gustavson S, Olin JW. Contemporary management of postcatheterization pseudoaneurysms. *Circulation* 2007; 115: 2666-2674.
  61. Collins N, Wainstein R, Ward M, Bhagwandeem R, Dzavik V. Pseudoaneurysm after transradial cardiac catheterization: case series and review of the literature. *Catheter Cardiovasc Interv* 2012; 80: 283-287.
  62. Tatli E, Buturak A, Cakar A, et al. Unusual Vascular Complications Associated with Transradial Coronary Procedures Among 10,324 Patients: Case Based Experience and Treatment Options. *J Interv Cardiol* 2015; 28: 305-312.
  63. Ates M, Sahin S, Konuralp C, et al. Evaluation of risk factors associated with femoral pseudoaneurysms after cardiac catheterization. *J Vasc Surg* 2006; 43: 520-524.
  64. Ortiz D, Jahangir A, Singh M, Allaqaband S, Bajwa TK, Mewissen MW. Access site complications after peripheral vascular interventions: incidence, predictors, and outcomes. *Circ Cardiovasc Interv* 2014; 7: 821-828.
  65. Stone PA, Campbell JE, AbuRahma AF. Femoral pseudoaneurysms after percutaneous access. *J Vasc Surg* 2014; 60: 1359-1366.
  66. Coughlin BF, Paushter DM. Peripheral pseudoaneurysms: evaluation with duplex US. *Radiology* 1988; 168: 339-342.
  67. Paulson EK, Kliewer MA, Hertzberg BS, O'Malley CM, Washington R, Carroll BA. Color Doppler sonography of groin complications following femoral artery catheterization. *AJR Am J Roentgenol* 1995; 165: 439-444.
  68. Tisi PV, Callam MJ. Treatment for femoral pseudoaneurysms. *Cochrane Database Syst Rev* 2013; 11: CD004981.
  69. Cox GS, Young JR, Gray BR, Grubb MW, Hertzner NR. Ultrasound-guided compression repair of postcatheterization pseudoaneurysms: results of treatment in one hundred cases. *J Vasc Surg* 1994; 19: 683-686.
  70. Finkelstein A, Bazan S, Halkin A, Herz I, et al. Treatment of post-catheterization femoral artery pseudo-aneurysm with para-aneurysmal saline injection. *Am J Cardiol* 2008; 101: 1418-1422.
  71. Periard D, Rey Meyer MA, Hayoz D, Cook S. Sealing pseudo-aneurysms of the femoral artery with saline injection: a new technique. *EuroIntervention* 2012; 7: 1206-1209.
  72. Gehling G, Ludwig J, Schmidt A, Daniel WG, Werner D. Percutaneous occlusion of femoral artery pseudoaneurysm by para-aneurysmal saline injection. *Catheter Cardiovasc Interv* 2003; 58: 500-504.
  73. ElMahdy MF, Kassem HH, Ewis EB, Mahdy SG. Comparison between ultrasound-guided compression and para-aneurysmal saline injection in the treatment of postcatheterization femoral artery pseudoaneurysms. *Am J Cardiol* 2014; 113: 871-876.
  74. Dzijan-Horn M, Langwieser N, Groha P, et al. Safety and efficacy of a potential treatment algorithm by using manual compression repair and ultrasound-guided thrombin injection for the management of iatrogenic femoral artery pseudoaneurysm in a large patient cohort. *Circ Cardiovasc Interv* 2014; 7: 207-215.



75. Luedde M, Krumsdorf U, Zehelein J, et al. Treatment of iatrogenic femoral pseudoaneurysm by ultrasound-guided compression therapy and thrombin injection. *Angiology* 2007; 58: 435-439.
76. Schneider C, Malisius R, Kuchler R, et al. A prospective study on ultrasound-guided percutaneous thrombin injection for treatment of iatrogenic post-catheterisation femoral pseudoaneurysms. *Int J Cardiol* 2009; 131: 356-361.
77. Chen DH, Sammel AM, Jain P, Jepson NS. Cardiologist operated ultrasound guided thrombin injection as a safe and efficacious first line treatment for iatrogenic femoral artery pseudoaneurysms. *Heart Lung Circ* 2015; 24: 165-172.
78. Ahmad F, Turner SA, Torrie P, Gibson M. Iatrogenic femoral artery pseudoaneurysms--a review of current methods of diagnosis and treatment. *Clin Radiol* 2008; 63: 1310-1316.
79. Paulson EK, Sheafor DH, Kliewer MA, et al. Treatment of iatrogenic femoral arterial pseudoaneurysms: comparison of US-guided thrombin injection with compression repair. *Radiology* 2000; 215: 403-408.
80. Eisenberg L, Paulson EK, Kliewer MA, Hudson MP, De-Long DM, Carroll BA. Sonographically guided compression repair of pseudoaneurysms: further experience from a single institution. *AJR Am J Roentgenol* 1999; 173: 1567-1573.
81. Cope C, Zeit R. Coagulation of aneurysms by direct percutaneous thrombin injection. *AJR Am J Roentgenol* 1986; 147: 383-387.
82. Aytekin C, Boyvat F, Gebedek O, Coskun M. Balloon-assisted ultrasound-guided direct percutaneous embolization of a peripheral pseudoaneurysm with n-butyl cyanoacrylate. *Eur Radiol* 2002; 12 Suppl 3: S185-S188.
83. Nakai M, Sato M, Sanda H, et al. Percutaneous fluoroscopically guided n-butyl cyanoacrylate (NBCA) injection for iatrogenic femoral arterial pseudoaneurysm under temporary balloon occlusion of arterial blood flow. *Jpn J Radiol* 2012; 30: 365-369.